

Historic, archived document

Do not assume content reflects current scientific knowledge, policies, or practices.

62.73

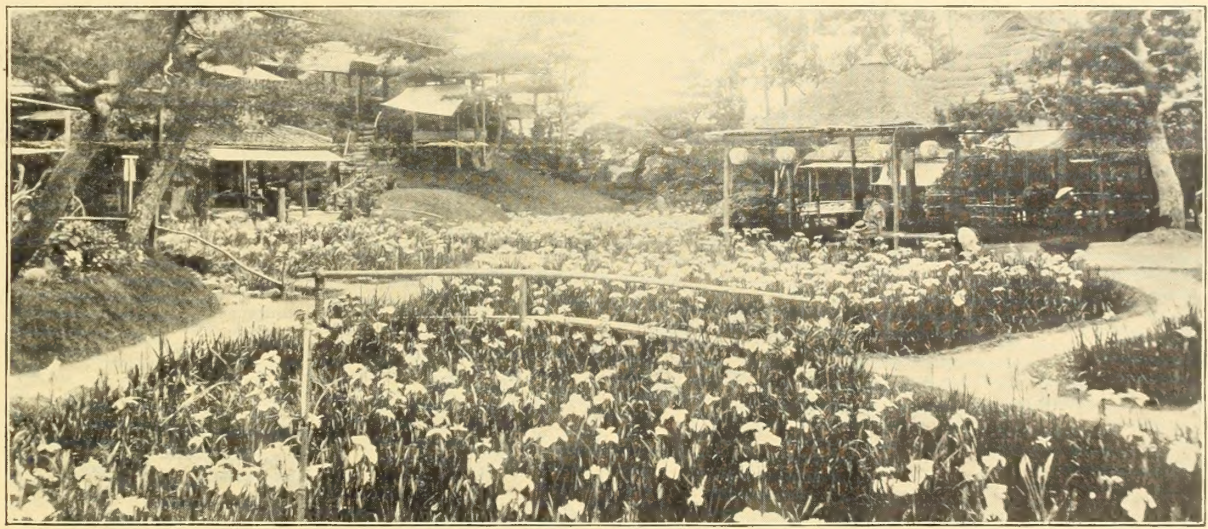
FALL 1913

LIBRARY
RECEIVED
★ DEC 14 1927 ★
U. S. Department of Agriculture.

Dreer's Imperial Japanese Iris

THESE magnificent Iris are among the most beautiful of our hardy early-summer flowering plants and are destined to become as popular as the hardy Phlox and Paeonies. They are valuable not only as decorative flowering subjects for the garden, but are also very useful as cut flowers.

While generally a deep, wet position is recommended for them, we have had far more satisfactory results where we have grown them in deeply cultivated well-drained ground, which has been well enriched with animal manure and where an abundance of water has been applied during their growing season and particularly during their flowering period.



Our stock of Japanese Iris is very extensive in a splendid assortment of home-grown varieties and can be relied upon for being true to name and description. We supply these in strong liberal divisions of a most satisfactory planting size.

We begin shipping during the latter part of September and we shall be pleased to book your order for delivery at any time after this date.

HENRY A. DREER, INC.

714 Chestnut Street

Philadelphia, Pa.

Please refer to circular number 136 in ordering

DOUBLE FLOWERING OR SIX-PETALED JAPANESE IRIS

No.

- 3 Kosui-no-iro.** Light violet with white veins.
4 Yomo-no-umi. A fine free-flowering early double white.
10 Shiga-no-ura-nami. Violet-purple veined with white.
20 Kuma-funjin. Silvery-white, with a broad border of magenta-lilac veined with white.
22 Sano-watashi. White with canary-yellow center.
24 Gosetsu-mai. White, veined and traced throughout with aniline-blue.
28 Tsurugi-no-mai. Rich deep purple.
29 Rish-no-toma. Silvery white, densely veined and minutely dotted with violet-blue.
36 Kumo-obi. Pure light violet-blue.
47 Renjo-no-toma. Petals peculiarly fluted, light violet with white halo and light veinings.



No.

- 53 Samidare.** Silvery white, suffused throughout with rich ultramarine blue.
74 Renkaku. White, densely marbled and spotted with bright violet-purple.
87 Kabata. Plumbago blue; shading to almost white at center.
91 Kan-ran. White, densely veined with rich violet-purple.
93 Hizakura. Light violet, with blue shadings.
94 Komochi-guma. Rich, velvety pansy-violet.
104 Kumamoto. Beautifully variegated throughout with white and deep purple.
105 Nagano. Rich violet-purple shaded blue.
107 Tokyo. The finest pure double white.
109 Hosokawa. Royal purple with white veinings.

Price, any of the above named varieties, \$1.25 per dozen; \$8.00 per 100; \$70.00 per 1000
 Unnamed mixed varieties, 85 cents per dozen; \$6.00 per 100; \$50.00 per 1000

SINGLE FLOWERING OR THREE-PETALED JAPANESE IRIS

No.

- 11 Hano-no-nishiki.** Bright violet-purple veined with white.
12 Shippo. Light lilac, densely veined with white.
14 Shishi-ikari. White ground, veined and mottled dark violet-purple.
23 Yedo-kagami. Rosy lilac; veined with white.
33 Kakujakuro. White ground, dusted with violet-blue.
43 Shi-un-ryo. Greyish-white, deeply and densely veined and suffused with violet.
55 Shuchiukwa. Crimson-purple; with large white veins and light halo.
62 Misutmoshito. Violet-purple, marbled with white.
67 Kigan-no-misao. A late flowering pure white.
70 Kimi-no-megumi. White densely veined with purple, a late flowering variety.

No.

- 73 Shirataki.** Silvery-white, border of petals suffused with light Parma-violet.
77 Yayaura. White, veined and dotted throughout with violet-purple.
82 Ari-ake. Violet-purple, marbled with white.
85 Ojochin. Light violet-purple with prominent white veins.
86 Sei-o-bo. White, with bright violet-purple markings.
96 Tebotan. White ground, with prominent violet-blue veinings.
97 Shiro-fungen. Light ground, suffused throughout with bluish-violet.
100 Yomo-zakuru. White ground, densely veined throughout with dark purple.
102 Shi-no-maki. Rich royal purple.
106 Sakata. Lavender blue, with deeper colored veinings.

Price, any of the above named varieties, \$1.25 per dozen; \$8.00 per 100; \$70.00 per 1000
 Unnamed mixed varieties, 85 cents per dozen; \$6.00 per 100; \$50.00 per 1000

GERMAN IRIS

Choice standard varieties which will be supplied in strong divisions

- Cherion.** Standards lilac-mauve; falls violet-mauve.
Edith. Standards light-plumbago-blue; falls purple.
Gazelle. White frilled rich mauve.
Honorabilis. Standards golden yellow; falls rich mahogany brown.
Johan de Witt. Standards bluish-violet; falls deep violet-purple, veined with white.
La Tendresse. Ageratum blue throughout.
Lord Salisbury. Standards amber-white; falls dark violet-purple.

- Mme. Chereau.** Standards and falls pure white; daintily edged with light blue.
Plicata. Standards and falls bright violet-purple.
Shakespeare. Standards straw-yellow, veined with burnt umber; falls deep carmine-violet.
Spectabilis. Standards and falls rich violet-purple; the earliest in flower.
Pumila hybrida Cyanea. Early; dwarf growing species; rich royal purple with darker shadings.

Price, any of the above named varieties (strong natural divisions,) \$4.00 per 100; \$25.00 per 1000
 Unnamed mixed sorts \$2.00 per 100; \$15.00 per 1000